



***saferoad***

***BMS***

*Bus Management System*

*Secure Bus Transportation*





# Welcome to Saferoad

***Saferoad develops software and hardware that transform businesses, save lives and create the foundation of future cities.***

*We are proud to be a driven IoT enabled mobility intelligence provider, pioneering the Saudi market and leading the industry as the first & only Saudi full-stack telematics solutions provider with in-house hardware and software development.*



# About Us

*We are committed to contribute to the wave of digital transformation in traffic safety, logistics, transportation and smart cities using latest advancements in IoT technology.*

*Since inception, Saferoad was envisioned as the company which saves lives. Commencing with as a small working unit, Saferoad grew organically to become a major IoT and Telematics player in the market, with over 1000 corporate clients and 500k+ connected devices and sensors.*

*With 7 offices across 5 countries, Saferoad is an innovation powerhouse with a team of 100+ hardworking individuals who work on developing innovative and delivering customized services, operating sustainable models and profitable business decisions.*



**1000+**

Corporate clients



**12.5 Bill. SR**

in secured assets



**500k+**

connected devices  
and sensors



**99%**

saving lives



**50 bill**

Processing 50  
billion records per  
day



**34 mill**

Receiving 34 mill  
data packets/min



**100+**

employees



**7**

offices

# Certifications



*Communication,  
Space &  
Technology  
Comission*



*Public Transport  
Authority*



*Saudi Food and  
Drug Authority*



*City  
Management  
Platform*



# Solutions

Saferoad solutions serve the Public Transportation, Logistics, Rental Cold-Chains Fleet Management requirements and more.

Our team is locally innovating, designing and developing solutions that contribute to the National Digital Transformation vision to drive economic prosperity and enhance people's lives.



## FMS

### Fleet Management System

Digital Transformation of Fleets through big data



## TMS

### Truck Management System

Connected Control through integration with Wasl platform



## RMS

### Rental Management System

Optimizing Rental Fleets



## CCM

### Cold Chain Management Solutions

Preserving Products and Goods



## ShareX

Connected Cars  
Car sharing platform



## BMS

Bus Management System  
Secure Bus Transportation



## UBI

Usage Based Insurance



Personal Tracker/  
Dashcam

# What is BMS?

*Bus Management System: is a system for monitoring and tracking bus movements and location. It provides real-time location tracking, driver monitoring, trip details from and to locations.*

Saferoad offers a class-leading BMS solution that provides real-time data, improves driving efficiency and offers key metrics for more control over bus fleets.



**BMS**



# The Need for BMS

## 1. Monitoring Buses

*To ensure that buses and passengers are going on the designated routes without interruptions or disruptions.*

## 2. Integration with Smart Cities

*Monitoring buses is one of the transportation requirements for moving towards smart cities.*

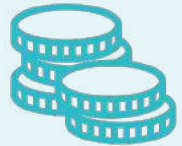


# BMS Benefits

*Our Bus Management System solution is designed to meet TGA bus regulations and gives clients more control over their bus fleets. BMS offers:*



**Passenger Safety:** Monitoring bus trips will ensure that passengers are protected and their location is known at any time.



**Improving Efficiency and ROI:** Using integrated smart IoT-enabled tracking and monitoring and identifying optimal routes for trips.



**School Bus Safety:** Ensuring no kid is left behind inside the bus



**Compliance and Regulatory Standards:** Complying with TGA's regulations for monitoring busses in the Kingdom.



# Solution Features

## *Inside the Bus: Screen displaying:*

- Trip number
- Destination
- Time
- Driver Name

## *Enhanced Metrics:*

- Real-time trip details in addition to historical data
- Driving behavior metrics
- Route optimization



# Solution Features – Cont.

## Unlimited Accessibility:

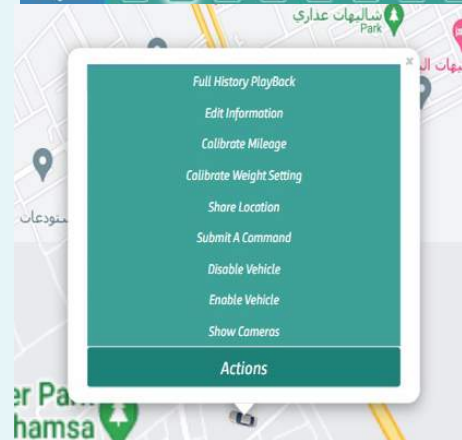
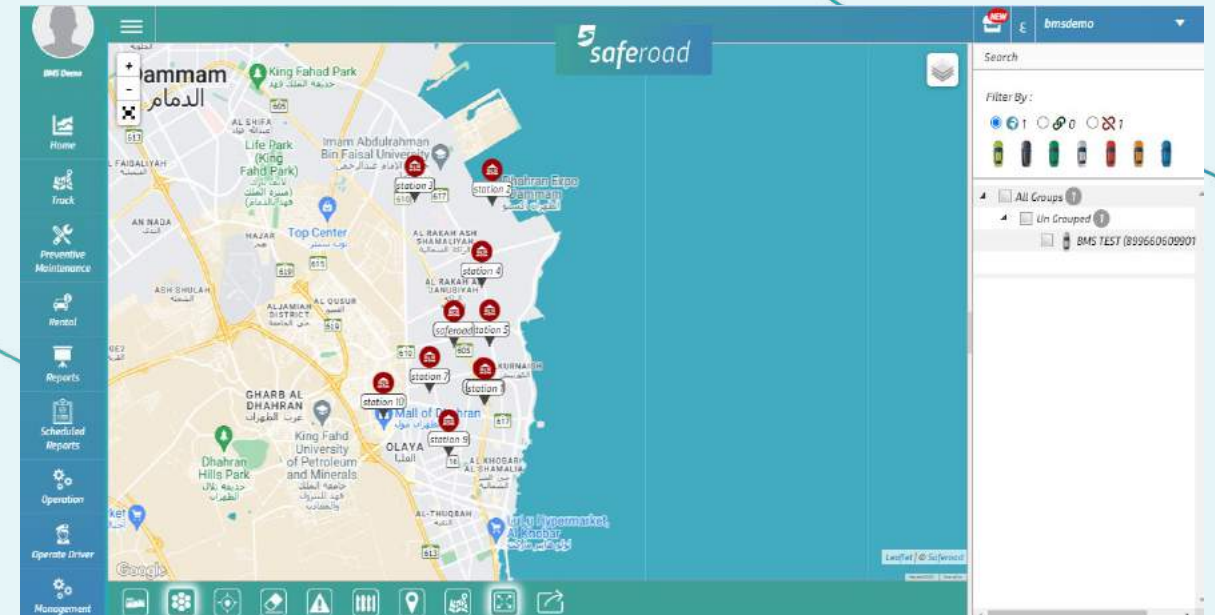
Ability to view a livestream from a camera at anytime during the day via the Saferoad platform.

## Utilization Reports:

Extensive reports and analysis to view trip details and enhance efficiency.

## Alarms:

For a wide range of driving behaviors such as using mobile phone, not wearing a seatbelt and fatigue.





## *Solution Features – Cont.*

### *Cameras:*

Ability to link more cameras for more visibility and information.

*Customizable Solution:* for buses of all capacities

*Easy Footage Retrieval:* via bluetooth or WiFi network.



## *Solution Setup*

*As per the government guidelines and regulations regarding required setup for buses for different capacities.*

***Recommended for up to 15 passenger buses:  
MDVR + 1 camera + 1 screen 16-inch***

***Recommended for 15+ passenger buses:  
MDVR + 2 cameras + 2 screens 16-inch***







*Thank You*

